



Load Support Application Guide for 2024

Adjustable Air Spring Kits and
On-Board Compressor Systems

TABLE OF CONTENTS



- Popular Applications 3
- Why Air Springs? 4
- Why Air Lift? 5
- Product Overview 6
- Adjustable Load Support Applications 8
- SlamAir Applications Load support for lowered vehicles 34
- Drag Bags Applications Air suspension for drag racing 34
- Motorhome/RV/Step Van Applications 35
- Air Lift 1000 Universal Air Spring Kits 36
- On-Board Air Compressor Systems 37
- Universal Air Spring Spacers and Cradles for Lifted Vehicles 37
- Replacement Air Springs 38
- Air Spring Specifications 39
- Service Parts 40
- Stainless Steel Upgrade Kits 41
- Compressor System Parts 41
- Tow Assist Products 42
- Frequently Asked Questions 43

POPULAR APPLICATIONS



Year	Model	AIR LIFT 1000™	AIR LIFT 1000HD™	RideControl™	LoadLifter 5000™	LoadLifter 5000™ Ultimate	LoadLifter 7500 XL Ultimate™	Air Lift ProSeries
CHEVROLET/GMC								
2019-2024	Silverado/Sierra 1500 2WD & 4WD				57288	88288		93288
2019-2024	Silverado/Sierra 1500 Trail Boss/AT4 4WD				57388	88388		93388
2019	Silverado 1500 Legacy/Sierra 1500 Limited				57204	88204		93204
2007-2019	Silverado/Sierra 1500 2WD & 4WD Short & Standard Bed			59565	57204	88204		
2007-2018	Silverado/Sierra 1500 2WD & 4WD Long Bed				57211	88211		
2011-2019	Silverado/Sierra 2500HD & 3500HD				57338	88338	57538	93338
2020-2024	Silverado/Sierra 2500HD (Silverado - No fit for ZR2/Sierra - No fit for AT4)				57341	88341	57541	93341
2020-2024	Silverado/Sierra 3500HD				57341	88341	57541	93341
2007-2024	GMC Acadia	60816						
2007-2017	Buick Enclave	60816						
2008-2017	Chevy Traverse	60816						
2000-2020	GMC Yukon & Yukon XL 1500	60769						
2000-2020	Chevy Tahoe 4 Door Only/Suburban 1500	60769						
1996-2023	Chevy Express G-2500 Heavy-duty - Call for 2024				57205	88205		
1996-2023	Chevy Express G-3500 Passenger Van Only - Call for 2024				57205	88205		
1996-2023	GMC Savana G-2500 & G-3500 - Call for 2024				57205	88205		
2015-2024	Chevy Colorado/GMC Canyon 2WD & 4WD (Does not fit diesel models)			59533				
2011-2015	Chevy/GMC C/K 3500 Commercial Chassis					88339		
RAM/JEEP								
2019-2024	Ram 1500 2WD (New body style)		60828HD					
2019-2024	Ram 1500 4WD (New body style) *See notes in listing		60828HD		57375*	88375*		93375*
2009-2023	Ram 1500 2WD & 4WD (Old body style)	60818	60818HD		57365	88365		93365
2014-2024	Ram 2500 2WD & 4WD (Old body style)	80532 (4WD)			57289	88289	57589	93289
2003-2018	Ram 3500 4WD				57295	88295	57595	93295
2019-2024	Ram 3500 2WD & 4WD	80532 (4WD)			57231	88231	57531	93231
2013-2023	Ram Promaster 1500, 2500, 3500 - Call for 2024				57233	88233		
2014-2023	Jeep Cherokee	60863						
2014-2023	Jeep Cherokee Trailhawk	60864						
2020-2024	Jeep Gladiator 4WD	60830						
2011-2024	Jeep Grand Cherokee 2WD & 4WD	60825						
2018-2024	Jeep Wrangler JL 4WD	60829						
FORD								
2019-2023	Ranger 2WD & 4WD - Call for 2024				57234	88234		
2010-2014	F-150 2WD			59568	57228	88228		
2010-2014	F-150 4WD			59568	57200	88200		
2015-2020	F-150 2WD			59570	57268	88268		
2015-2020	F-150 4WD			59570	57385	88385		93285
2021-2024	F-150 2WD & 4WD (No fit for PowerBoost models)				57355	88355		93355
2021-2024	F-150 PowerBoost 4WD				57389	88389		
2011-2016	F-250 2WD				57395	88395		
2011-2016	F-250 4WD				57396	88396	57596	93396
2011-2016	F-350 2WD				57395	88395		
2011-2016	F-350 4WD				57396	88396	57596	93396
2017-2022	F-250 & F-350 2WD - Call for 2023				57391	88391		
2017-2019	F-250 & F-350 4WD				57399	88399	57577	93399
2020-2022	F-250 & F-350 SRW 4WD				57352	88352	57552	93352
2020-2022	F-350 DRW - Call for 2023/2024				57350	88350	57550	93350
2015-2016	F-450 Pickup Non-Commercial Chassis					88349		
2017-2022	F-450 Pickup Non-Commercial Chassis 4WD				57399	88399	57577	93399
2017-2024	F-450 Pickup Non-Commercial Chassis 4WD				57399	88399		93399
2005-2024	F-450 & F-550 Commercial Chassis 2WD & 4WD				57345			
2011-2019	Explorer 2WD & 4WD	60821						
2015-2024	Transit 150, 250, 350				57213	88213		
NISSAN								
2013-2024	Frontier 4WD				57244			
2017-2024	Titan				57331	88331		
2016-2023	Titan XD				57229	88229		
TOYOTA								
2005-2023	Tacoma 2WD & 4WD - Call for 2024				57300			
2007-2021	Tundra 2WD & 4WD					88299		
2022-2024	Tundra 2WD & 4WD (No fit for factory air or 5th wheel hitches)				57383	88383		

Please call 1.800.248.0892 for 2024 applications.



Why Air Springs?

Tow and Haul with Safety and Comfort with Air Lift Adjustable Air Spring Kits

- Air springs ensure that weight is properly distributed to all four tires, which maximizes vehicle stability, safety and comfort (see graphics below)
- Add air when towing or hauling; deflate when riding empty for a softer ride
- Made with rugged, durable components
- Easy and quick to install with common hand tools
- No. 1 choice of professional drivers

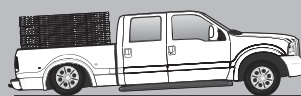


WITHOUT AIR LIFT AIR SPRINGS...
The vehicle squats, and the possibility of body roll and bottoming out increases.



WITH AIR LIFT AIR SPRINGS...
Ideal ride height is restored, providing greater safety and comfort.

Air Lift air spring kits solve these common problems



Squat

Proper weight distribution to all tires improves steering, braking and tire wear. This is especially important while towing; adjust the air springs to accept the tongue weight of the trailer.



Headlight Aim

Only level and stable vehicles provide safe and proper headlight aiming — critical for night driving safety.



Braking and Steering

Front tires account for the majority of braking and steering. Air springs ensure that weight is properly distributed to all four tires for optimal braking and steering.

Bottoming Out

Air Lift springs restore normal ride height when loaded or towing, reducing suspension wear and eliminating crashing on bumps.



Rough Ride

Air Lift's progressive spring rate soaks up bumps, keeping tires on the road for better handling.



Body Roll

Air springs increase spring rate and vastly improve vehicle stability. Less roll means a safer and more comfortable ride.



Trailer Sway

When towing a trailer, air springs permit precise vehicle height adjustment for exact alignment, reducing trailer sway.



Why Air Lift?

Load Support Products That Fit, Work and Last. Guaranteed.

- A 3rd generation, family-owned Lansing, Michigan, suspension-specialty company since 1949
- Our in-house customer service department is available to answer your questions Monday through Friday, 8am-8pm (EST)
- The most comprehensive warranty plus an exclusive 60-day no-questions-asked, money-back guarantee
- Over 450 vehicle fitments
- Don't run around town trying to find a working air pump... Air Lift has the most innovative, easy-to-use on-board air compressor systems available



INDUSTRY EXCLUSIVE!

Air Lift's Lifetime Warranty Covers the Entire Contents of the Air Spring Kit

While other companies offer a lifetime warranty on their air springs, only Air Lift covers the air springs as well as the entire contents of the kit, including brackets, fittings and air line. Air Lift Company warrants that Air Lift 1000, Air Lift 1000 HD, RideControl, LoadLifter 5000, LoadLifter 5000 Ultimate, LoadLifter 7500 XL Ultimate and ProSeries air spring systems will be free from manufacturer's defects in workmanship or materials for as long as the original purchaser owns the original vehicle of installation. This does not include installation or other service charges for replacement. Purchase receipts are required for all warranty claims. Go to www.airliftcompany.com/warranty/ for official warranty program details.

INDUSTRY EXCLUSIVE!

Air Lift Guarantees Your Satisfaction or Your Money Back!

Air Lift offers a 60-Day No Questions Asked, Money-Back Guarantee on load support air springs and all load support on-board air compressor systems. Ride on Air Lift's air springs kit and/or use an Air Lift on-board air compressor system for 60 days. We guarantee you'll be happy with the improvement in ride comfort, load handling and air spring control, or get your money back. If you're not satisfied, you may remove the products and return them to your dealer for a full refund of your purchase price within the first 60 days after purchase.

Refund must be made by the selling agent. Offer is limited to purchasing a set of Air Lift 1000, Air Lift 1000 HD, RideControl, LoadLifter 5000, LoadLifter 5000 Ultimate, LoadLifter 7500 XL Ultimate, ProSeries or Slam Air air springs; limited to WirelessAir, WirelessOne, all LoadController on-board air compressor systems. Offer may be withdrawn at any time and does not include any units improperly installed, modified, substituted or abused. Valid only on private, non-commercial applications. Date proof of purchase is required. Does not include reimbursement for labor/installation.



Two-Year Warranty

When Consumer Installs Themselves

Air Lift Company warrants to the original purchaser that WirelessAir™, WirelessOne™ and all LoadController™ on-board air compressor systems will be free from defects in workmanship or materials for two years on the vehicle from the date of the original purchase. This does not include installation or other service charges for replacement.



Four-Year Warranty When Installed by an Authorized Installer

When installed by an Air Lift Authorized Installer, Air Lift Company warrants to the original purchaser that WirelessAir and WirelessOne on-board air compressor systems will be free from defects in workmanship or materials for four years from the date of the original purchase. This does not include installation or other service charges for replacement.



Warranty programs may change at the discretion of Air Lift Company. View complete, detailed warranty information at <http://air-lift.co/ls/warranty>

Warranty Information

Air Lift ProSeries™	Lifetime Limited
LoadLifter 7500 XL Ultimate™	Lifetime Limited
LoadLifter 5000™ Ultimate	Lifetime Limited
LoadLifter 5000™	Lifetime Limited
RideControl™	Lifetime Limited
Air Lift 1000™	Lifetime Limited
Air Lift 1000 HD™	Lifetime Limited
SlamAir™	Lifetime Limited
WirelessAir™	2 or 4 Year Limited
WirelessOne™	2 or 4 Year Limited
LoadController™ Compact	2 Year Limited
LoadController™ Panel	2 Year Limited
Other Accessories	2 Year Limited
Performance Systems	1 Year Limited

Dedication to Quality

Air Lift Company is proud to be ISO 9001:2015 certified.

Air Lift Company is committed to fulfilling the requirements of their quality management system: to develop, manufacture and continuously improve the highest quality products that fit, work and last. Our goal is to consistently provide products and services that meet or exceed the requirements and expectations of our customers.



Product Overview



Air Lift Product	Air Lift 1000™	Air Lift 1000 HD™	RideControl™		LoadLifter 5000™	LoadLifter 5000™ ULTIMATE	LoadLifter 7500 XL™ ULTIMATE	Air Lift ProSeries
Representative Kit Photo								
Uses	Good for towing/hauling loads up to GVWR Adjustable load support for coil sprung vehicles	Good for towing/hauling loads up to GVWR Our highest rated coil spring insert exclusively for RAM 1500	Good for towing/hauling loads up to GVWR Excellent stability, safety and car-like ride comfort		Good for towing/hauling loads up to GVWR Safe and comfortable ride, loaded or unloaded	Good for towing/hauling loads up to GVWR Ultimate ride comfort with internal jounce bumper	Good for towing/hauling loads up to GVWR Level the heaviest loads at lower pressures	Good for towing/hauling loads up to GVWR Featuring aluminum anodized end caps
Fitment	<ul style="list-style-type: none"> Most SUVs, CUVs, cars and minivans with open coil springs Motorhomes 	<ul style="list-style-type: none"> Ram 1500 trucks 	<ul style="list-style-type: none"> Most 1/2-ton trucks Some vans 		<ul style="list-style-type: none"> Most 1/2, 3/4 & 1-ton trucks Motorhomes/RVs Some full-size vans 	<ul style="list-style-type: none"> Most 1/2, 3/4 & 1-ton trucks Motorhomes/RVs Some full-size vans 	<ul style="list-style-type: none"> Popular 3/4 & 1-ton trucks 	<ul style="list-style-type: none"> Most 1/2, 3/4 & 1-ton trucks Motorhomes/RVs Some full-size vans
Load-Leveling Capacity	Up to 1,000 lbs.*	Up to 2,100 lbs.*	Up to 2,000 lbs.*		Up to 5,000 lbs.*	Up to 5,000 lbs.*	Up to 7,500 lbs.*	Up to 5,000 lbs.*
Air Adjustable	From 5 to 35 PSI 90 PSI for motorhomes	From 5 to 50 PSI	From 5 to 100 PSI		From 5 to 100 PSI	From 5 to 100 PSI	From 5 to 100 PSI	From 5 to 100 PSI
Air Spring	Polyurethane coil-insert spring	Polyurethane coil-insert spring	Rubber sleeve-style spring		6-inch rubber convoluted bellows spring	6-inch rubber convoluted bellows spring with internal jounce bumper	7-inch rubber convoluted bellows spring with internal jounce bumper	6-inch rubber convoluted bellows spring
Compatible with most in-bed hitches	Yes	Yes	No		Yes (In most applications)	Yes (In most applications)	Yes	Yes (In most applications)
Additional Features		Schrader valve	Alignment tool		Roll plates	Roll plates Internal jounce bumper	Roll plates 20% more volume than LoadLifter 5000 Internal jounce bumper	Roll plates Aluminum anodized end caps Stainless steel attaching hardware
Warranty**								
Money-Back Guarantee**								

*Never exceed manufacturer's recommended Gross Vehicle Weight Rating.
**See page 5 for details.



Adjustable Load Support Applications

Air Lift Front Kits

(Representative front kit image)



Application Information for All Air Lift Front Kits

Front (All Product Lines)

Air Lift 1000 & Air Lift 1000 HD

Up to 1,000 lbs. Load-Leveling Capacity*
2,100 lbs. for 1000HD*

RideControl

Up to 2,000 lbs. Load-Leveling Capacity*



LoadLifter 5000

Up to 5,000 lbs. Load-Leveling Capacity*



LoadLifter 5000 ULTIMATE

Up to 5,000 lbs. Load-Leveling Capacity*
+20%



LoadLifter 7500 XL ULTIMATE

Up to 7,500 lbs. Load-Leveling Capacity*
+20%



Air Lift ProSeries

Up to 5,000 lbs. Load-Leveling Capacity*



Model	Start Year	End Year	Drive	Notes	Front (All Product Lines)				Rear				Rear				Rear				Rear				Rear				
					Kit	TYPE	DIFFICULTY LEVEL	TOOLS	INSTALL TIME	Kit	DIFFICULTY LEVEL	TOOLS	INSTALL TIME	Kit	DIFFICULTY LEVEL	TOOLS	INSTALL TIME	Kit	DIFFICULTY LEVEL	TOOLS	INSTALL TIME	Kit	DIFFICULTY LEVEL	TOOLS	INSTALL TIME	Kit	DIFFICULTY LEVEL	TOOLS	INSTALL TIME
Acura																													
MDX	2005	2013	F&A	Fits front and all wheel drive						60815	🔧	🔧	🔧	🔧	2														
Buick - Car																													
Century	1982	1996	FWD	Including station wagon						60797	🔧	🔧	🔧	🔧	1														
Deluxe, Custom, Skylark, Sport Wagon	1964	1966								60750	🔧	🔧	🔧	🔧	1														
Deluxe, Special, Skylark, Gran Sport	1967	1972		Excluding station wagon						60744	🔧	🔧	🔧	🔧	1														
Electra & Park Avenue	1985	1996	FWD	Excluding station wagon						60798	🔧	🔧	🔧	🔧	1														
Electra, Centurion, Wildcat, LeSabre	1965	1984		Excluding Estate Wagon						60755	🔧	🔧	🔧	🔧	1														
Estate Wagon	1977	1990								60755	🔧	🔧	🔧	🔧	1														
LeSabre	1985	1985	RWD							60755	🔧	🔧	🔧	🔧	1														
LeSabre	1986	1999	FWD	Excluding station wagon						60798	🔧	🔧	🔧	🔧	1														
LeSabre	2000	2005								60776	🔧	🔧	🔧	🔧	1														
Park Avenue	1997	2005								60776	🔧	🔧	🔧	🔧	1														
Regal, Century, Gran Sport, Luxus	1973	1987	RWD	Including station wagon						60733	🔧	🔧	🔧	🔧	1														
Riviera	1979	1985								60783	🔧	🔧	🔧	🔧	1														
Riviera	1995	1999								60776	🔧	🔧	🔧	🔧	1														
Roadmaster Estate Wagon & Sedan	1991	1996								60755	🔧	🔧	🔧	🔧	1														
Skylark	1985	1996								60789	🔧	🔧	🔧	🔧	1														
Buick - Truck/SUV																													
Enclave	2007	2017	F&A	2017 Limited only						60816	🔧	🔧	🔧	🔧	2														
Encore GX	2020	2024	F&A							60857	🔧	🔧	🔧	🔧	2														
Envision	2017	2020	F&A							60856	🔧	🔧	🔧	🔧	2														
Cadillac - Car																													
All Rear Wheel Drive Models	1965	1993								60755	🔧	🔧	🔧	🔧	1														
Coupe Deville, Sedan Deville, Fleetwood	1985	1993								60798	🔧	🔧	🔧	🔧	1														
Touring Sedan	1985	1993	FWD							60798	🔧	🔧	🔧	🔧	1														
Cadillac - Truck/SUV																													
Escalade 4-Door Only	1999	2000	2&4													59518	🔧	🔧	🔧	🔧	2								
Escalade, Escalade XL	2002	2007	2&4	Will not fit factory-installed auto-leveling option on 2007 models						60769	🔧	🔧	🔧	🔧	1														
XT5	2017	2024	AWD	Does not fit internal coil spring jounce bumper models						60857	🔧	🔧	🔧	🔧	2														
Chevrolet - Car																													
Beretta, Corsica	1988	1996								60789	🔧	🔧	🔧	🔧	1														
Camaro, Z28	1982	2002								60797	🔧	🔧	🔧	🔧	1														
Caprice, Impala	1971	1996		Excluding 94-96 SS models						60755	🔧	🔧	🔧	🔧	1														
Caprice, Impala Station Wagons	1977	1996								60755	🔧	🔧	🔧	🔧	1														
Impala, Bel Air, Biscayne	1958	1964		Including station wagons						60713	🔧	🔧	🔧	🔧	1														
Cavalier	1982	1994		Including station wagons						60789	🔧	🔧	🔧	🔧	1														
Celebrity	1982	1990		Including station wagons						60797	🔧	🔧	🔧	🔧	1														
Chevvelle, El Camino	1964	1966								60750	🔧	🔧	🔧	🔧	1														
Chevvelle, Malibu, Laguna	1973	1983		Including station wagons						60733	🔧	🔧	🔧	🔧	1														
Chevvelle, Malibu, SS, '300' Deluxe, Monte Carlo	1967	1972		Excluding station wagons						60744	🔧	🔧	🔧	🔧	1														
El Camino	1967	1987								60733	🔧	🔧	🔧	🔧	1														
Impala Sedan, SS	1994	1996								60786	🔧	🔧	🔧	🔧	1														
Malibu, Malibu Max	2004	2006								60776	🔧	🔧	🔧	🔧	1														
Monte Carlo	1973	1988		Excluding SS						60733	🔧	🔧	🔧	🔧	1														
Monte Carlo SS	1984	1988								60744	🔧	🔧	🔧	🔧	1														

Add an Air Lift on-board air compressor system. See page 37 to learn more.

WirelessAIR



P/N 74000
P/N 74000EZ (with EZ Mount)

WirelessONE



P/N 25980
P/N 25980EZ (with EZ Mount)

WirelessONE Tank + EZ Mount



P/N 25981EZ

LoadController



Single P/N 25854
Dual P/N 25856

Kit Type Abbreviations

- Air Lift 1000 [AL]
- RideControl [RC]
- LoadLifter 5000 [LL]
- LoadLifter 5000 Ultimate [U]
- LoadLifter 7500 XL Ultimate [XL]

Features Key and Installation Scale

Features	Difficulty Level	Tools	Modification to Vehicle	Installation Time
Internal Jounce Bumper	Easy	Hand Tools	No metal drilling, grinding or removal of factory components.	1 Number of hours a typical professional installer will take to complete a full installation 2 3 4
Stainless Steel Attaching Hardware		Hand tools and drill	Drilling may be required. Removal or temporary disconnection of factory components may be required.	
Anodized Aluminum Endcaps	Medium	Special tools required	Drilling, cutting and/or grinding required. Removal or temporary disconnection of factory components may be required.	
	Expert			





Adjustable Load Support Applications



Application Information for All Air Lift Front Kits

Front (All Product Lines)



Up to 1,000 lbs. Load-Leveling Capacity*
2,100 lbs. for 1000HD*

Rear



Up to 2,000 lbs. Load-Leveling Capacity*

Rear



Up to 5,000 lbs. Load-Leveling Capacity*

Rear



Up to 5,000 lbs. Load-Leveling Capacity*

Rear



Up to 7,500 lbs. Load-Leveling Capacity*
+20%

Rear



Up to 5,000 lbs. Load-Leveling Capacity*

Rear

Model	Start Year	End Year	Drive	Notes	Kit	TYPE	DIFFICULTY LEVEL	TOOLS	INSTALL TIME	Kit	TYPE	DIFFICULTY LEVEL	TOOLS	INSTALL TIME	Kit	TYPE	DIFFICULTY LEVEL	TOOLS	INSTALL TIME	Kit	TYPE	DIFFICULTY LEVEL	TOOLS	INSTALL TIME	Kit	TYPE	DIFFICULTY LEVEL	TOOLS	INSTALL TIME									
Chevrolet - Truck/SUV																																						
Avalanche 1500	2002	2014	2&4	Will not fit factory-installed auto-leveling option						60769	AL	1																										
Avalanche 2500	2002	2006	4WD	Requires 6" between the tire and frame											59526	AL	2																					
Blazer	1969	1991	4WD	Requires 6" between the tire and frame on rear kit											59501	AL	2																					
Blazer	1973	1991	2WD	Requires 6" between the tire and frame on rear kit	81560	AL	1								59501	AL	2																					
Blazer, Tahoe 2 Door Only	1992	1997	4WD												59518	AL	2																					
Blazer	2019	2024	F&A	Does not fit internal coil spring jounce bumper models						60857	AL	2																										
C-1500 1/2 Ton Pickup	1973	1987	2WD	57215 & 88215: Requires 8" between the tire and frame	81560	AL	1								57215	AL	2								88215	AL	2											
C-1500 1/2 Ton Pickup Regular & Crew Cab	1988	1998	2WD	59501: Not extended cab; Requires 6" between the tire and frame 57216 & 88216: Not extended cab; Does not fit if axle to frame distance is 7.25" or less											59501	AL	2								57216	AL	2											
C-10 1/2 Ton Pickup	1973	1987	2WD	57215 & 88215: Requires 8" between the tire and frame	81560	AL	1								57215	AL	2								88215	AL	2											
C-20 3/4 Ton Pickup	1973	1987	2WD	Requires 8" between the tire and frame	81560	AL	1								57215	AL	2								88215	AL	2											
C-2500 3/4 Ton Pickup	1988	2000	2WD	Does not fit if axle to frame distance is 7.25" or less											57216	AL	2								88216	AL	2											
C-30 1 Ton Pickup	1967	1987	2WD	Requires 8" between the tire and frame	81560	AL	1								57215	AL	2								88215	AL	2											
C-3500 1 Ton	1999	2000	2WD	Under 11,000 GVWR; Does not fit if axle to frame distance is 7.25" or less											57216	AL	2								88216	AL	2											
Colorado Z71 & YC1	2004	2012	2WD												59539	AL	1																					
Colorado Z71 & Z85	2004	2012	4WD												59539	AL	1																					
Colorado	2015	2024	2&4	Does not fit diesel models											59533	AL	2																					
Equinox	2018	2024	2&A							60856	AL	2																										
Geo-Tracker 2 Door	1989	2004	4WD							60793	AL	1																										
K-10 1/2 Ton Pickup	1973	1987	4WD	59501: Requires 6" between the tire and frame											59501	AL	2								57237	AL	2											
K-1500 1/2 Ton Pickup	1988	1998	4WD	59501: Requires 6" between the tire and frame 57216 & 88216: Does not fit if axle to frame distance is 7.25" or less											59501	AL	2								57216	AL	2											
K-20 3/4 Ton Pickup	1973	1987	4WD	Requires 8" between the tire and frame											57237	AL	2								88237	AL	2											
K-2500 3/4 Ton Pickup	1988	2000	4WD	Does not fit if axle to frame distance is 7.25" or less											57216	AL	2								88216	AL	2											
K-30 1 Ton Pickup	1973	1987	4WD	Requires 8" between the tire and frame											57237	AL	2								88237	AL	2											
K-3500 1 Ton	1988	2000	4WD	Under 11,000 GVWR; Does not fit if axle to frame distance is 7.25" or less											57216	AL	2								88216	AL	2											
S-10 Pickup	1982	2003	2WD	Without sport suspension											59529	AL	2																					
S-10 Pickup	1983	1993	4WD												59529	AL	2																					
Silverado 1500 Classic GMT 800 series	1999	2007	2WD	Requires 6" between the tire and frame											59501	AL	2																					
Silverado 1500 Classic GMT 800 series	1999	2007	4WD	Requires 6" between the tire and frame - Does not fit QuadraSteer											59501	AL	2								57272	AL	2											
Silverado 1500 GMT 900 series aka "Legacy"	2007	2019	2&4	Fits 68.4" and 78" bed lengths only											59565	AL	1								57204	AL	2											
Silverado 1500 GMT 900 series	2007	2018	2&4	Fits 97.8" bed lengths only																					57211	AL	2											
Silverado 1500	2019	2024	2&4																						57288	AL	2											
Silverado 1500 Legacy	2019	2019	2&4												59565	AL	1								57204	AL	2											
Silverado 1500 Trail Boss	2019	2024	4WD																						57388	AL	2											
Silverado 1500HD	2001	2005	2&4	59501: Requires 6" between the tire and frame 57250 & 88250: Will fit most side-mount 5th wheel hitch applications											59501	AL	2								57250	AL	2											
Silverado 2500 3/4 Ton Pickup	1999	2004	2&4	Except 2500 HD; Will fit most side-mount 5th wheel hitch applications. Will not fit with QuadraSteer.																					57250	AL	2											
Silverado 2500HD 3/4 Ton Pickup	2001	2010	2&4	Will fit most side-mount 5th wheel hitch applications. Will not fit with QuadraSteer.																					57275	AL	2											
Silverado 2500HD 3/4 Ton Pickup	2011	2019	2&4	Will fit most side-mount 5th wheel hitch applications																					57338	AL	1.5											
Silverado 2500HD	2020	2024	4WD	Fits most in bed hitches. Fits all puck style 5th wheel and gooseneck hitch mounts. May not work with frame side-mount 5th wheel and gooseneck hitches, review installation guide for reference. Does not fit the ZR2 model.																					57341	AL	2.5											
Silverado 3500 1 Ton Pickup	2001	2010	2&4	Fits single-rear-wheel (SRW) and dual-rear-wheel (DRW) models. Will fit most side-mount 5th wheel hitch applications. Does not fit cab & chassis applications. Will not fit with QuadraSteer.																					57275	AL	2											

Add an Air Lift on-board air compressor system. See page 37 to learn more.

WirelessAIR



P/N 74000
P/N 74000EZ (with EZ Mount)

WirelessONE



P/N 25980
P/N 25980EZ (with EZ Mount)

WirelessONE Tank + EZ Mount



P/N 25981EZ

LoadController



Single P/N 25854
Dual P/N 25856

Kit Type Abbreviations

- Air Lift 1000..... [AL]
- RideControl..... [RC]
- LoadLifter 5000..... [LL]
- LoadLifter 5000 Ultimate..... [U]
- LoadLifter 7500 XL Ultimate..... [XL]

Features Key and Installation Scale

Features	Difficulty Level	Tools	Modification to Vehicle	Installation Time
Internal Jounce Bumper	Easy	Hand Tools	No metal drilling, grinding or removal of factory components.	1 Number of hours a typical professional installer will take to complete a full installation
Stainless Steel Attaching Hardware	Medium	Hand tools and drill	Drilling may be required. Removal or temporary disconnection of factory components may be required.	2
Anodized Aluminum Endcaps	Expert	Special tools required	Drilling, cutting and/or grinding required. Removal or temporary disconnection of factory components may be required.	3
				4





Adjustable Load Support Applications

Air Lift Front Kits

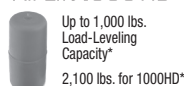
(Representative front kit image)



Application Information for All Air Lift Front Kits

Front (All Product Lines)

Air Lift 1000 & Air Lift 1000 HD



Up to 1,000 lbs. Load-Leveling Capacity*
2,100 lbs. for 1000HD*

RideControl



Up to 2,000 lbs. Load-Leveling Capacity*

LoadLifter 5000



Up to 5,000 lbs. Load-Leveling Capacity*

LoadLifter 5000 ULTIMATE



Up to 5,000 lbs. Load-Leveling Capacity*
+20%

LoadLifter 7500 XL ULTIMATE



Up to 7,500 lbs. Load-Leveling Capacity*
+20%

Air Lift ProSeries



Up to 5,000 lbs. Load-Leveling Capacity*

Model	Start Year	End Year	Drive	Notes	Front (All Product Lines)				Rear				Rear				Rear				Rear				Rear			
					Kit	TYPE	DIFFICULTY LEVEL	TOOLS	INSTALL TIME	Kit	TYPE	DIFFICULTY LEVEL	TOOLS	INSTALL TIME	Kit	TYPE	DIFFICULTY LEVEL	TOOLS	INSTALL TIME	Kit	TYPE	DIFFICULTY LEVEL	TOOLS	INSTALL TIME	Kit	TYPE	DIFFICULTY LEVEL	TOOLS
Ford - Car																												
Crown Victoria	1998	2007								60798																		
Crown Victoria, Country Squire	1983	1987								60769																		
Focus Station Wagon	2000	2007								60724																		
Mustang	1979	2004								60797																		
Taurus Station Wagon	1986	2005								60776																		
Taurus SHO	2010	2019								60821																		
Thunderbird	1992	1997								60776																		
Thunderbird	1989	1991								60789																		
Ford - Truck/SUV																												
Bronco	1980	1996	4WD	59501: Requires 6" between tire and frame 57215 & 88215: Requires 8" between tire and frame																								
Bronco II	1983	1990	4WD	Requires 6" between tire and frame																								
Bronco Sport	2021	2024	4WD							60858																		
Edge	2007	2015	2&4							60819																		
Edge	2016	2020	2&4							60854																		
Escape	2020	2024	AWD							60858																		
Excursion	2000	2004	2WD																									
Excursion	2000	2005	4WD							57154 LL 88154 U																		
Expedition	1997	2002	4WD							61792																		
Explorer	2011	2019		Fits D3 and D4 Chassis						60821																		
Explorer	2020	2024	2&4	Does not fit factory air equipped vehicles						60855																		
Flex	2009	2019	2&A							60821																		
Maverick	2022	2024	AWD							60859																		
F-100, 150 1/2 Ton Pickup	1966	1979	4WD	59501: Requires 6" between tire and frame 57215 & 88215: Requires 8" between tire and frame																								
F-100, 150 1/2 Ton Pickup	1968	1996	2WD	59501: Requires 6" between tire and frame 57215 & 88215: Requires 8" between tire and frame																								
F-100, 150 1/2 Ton Pickup	1980	1996	4WD	59501: Requires 6" between tire and frame 57215 & 88215: Requires 8" between tire and frame																								
F-100, 250 1/2 & 3/4 Ton Pickup	1953	1967	2WD	59501: Requires 6" between tire and frame 57215 & 88215: Requires 8" between tire and frame																								
F-150 Pickup - including Heritage 1/2 Ton Pickup	1997	2004	2&4	Including Lightning & Harley Davidson. Requires 6" between tire and frame. Short box, extended cab, with 5th wheel hitch use kit #59542 instead.																								
F-150 1/2 Ton Pickup	2004	2009	2WD	New body, excludes Heritage models																								
F-150 1/2 Ton Pickup	2004	2009	4WD	New body, excludes Heritage models																								
F-150 1/2 Ton Pickup	2010	2014	2WD	New body, excludes Heritage models. Does not fit the F-150 Raptor.																								
F-150 1/2 Ton Pickup	2010	2014	4WD	New body, excludes Heritage models. Does not fit the F-150 Raptor.																								
F-150 1/2 Ton Pickup	2015	2020	2WD																									
F-150 1/2 Ton Pickup	2015	2020	4WD																									
F-150 1/2 Ton Pickup	2021	2024	2&4	Does not fit the F-150 PowerBoost models																								
F-150 PowerBoost 1/2 Ton Pickup	2021	2024	4WD																									
F-150 Raptor	2009	2014	4WD																									
F-150 Raptor	2017	2020	4WD																									
F-150 Raptor	2021	2024	4WD																									

Add an Air Lift on-board air compressor system. See page 37 to learn more.

WirelessAIR



P/N 74000
P/N 74000EZ (with EZ Mount)

WirelessONE



P/N 25980
P/N 25980EZ (with EZ Mount)

WirelessONE Tank + EZ Mount



P/N 25981EZ

LoadController



Single P/N 25854
Dual P/N 25856

Kit Type Abbreviations

- Air Lift 1000 AL
- RideControl RC
- LoadLifter 5000 LL
- LoadLifter 5000 Ultimate U
- LoadLifter 7500 XL Ultimate XL

Features Key and Installation Scale

Features	Difficulty Level	Tools	Modification to Vehicle	Installation Time
Internal Jounce Bumper	Easy	Hand Tools	No metal drilling, grinding or removal of factory components.	1 Number of hours a typical professional installer will take to complete a full installation
Stainless Steel Attaching Hardware	Medium	Hand tools and drill	Drilling may be required. Removal or temporary disconnection of factory components may be required.	2
Anodized Aluminum Endcaps	Expert	Special tools required	Drilling, cutting and/or grinding required. Removal or temporary disconnection of factory components may be required.	3
				4





Adjustable Load Support Applications



Front (All Product Lines)



Model	Start Year	End Year	Drive	Notes	Front (All Product Lines)				Rear				Rear				Rear				Rear				Rear			
					Kit	TYPE	DIFFICULTY LEVEL	TOOLS	INSTALL TIME	Kit	DIFFICULTY LEVEL	TOOLS	INSTALL TIME	Kit	DIFFICULTY LEVEL	TOOLS	INSTALL TIME	Kit	DIFFICULTY LEVEL	TOOLS	INSTALL TIME	Kit	DIFFICULTY LEVEL	TOOLS	INSTALL TIME	Kit	DIFFICULTY LEVEL	TOOLS
C-1500 1/2 Ton Pickup Regular & Crew Cab	1988	1998	2WD	59501: Requires 6" between tire and frame 57216 & 88216: Not extended cab; Does not fit if axle to frame distance is 7.25" or less																								
C-1500 1/2 Ton Pickup Extended Cab	1988	1998	2WD	59501: Requires 6" between tire and frame																								
K-1500 1/2 Ton Pickup Regular Cab	1988	1998	4WD	59501: Requires 6" between tire and frame 57216 & 88216: Does not fit if axle to frame distance is 7.25" or less																								
C-2500 3/4 Ton Pickup	1973	1987	2WD	Requires 8" between tire and frame	81560	AL	1	2	1																			
K-2500 3/4 Ton Pickup	1973	1987	4WD	Requires 8" between tire and frame																								
C & K-2500 3/4 Ton Pickup	1988	2000	2&4	Does not fit if axle to frame distance is 7.25" or less																								
C-3500 1 Ton Pickup	1968	1987	2WD	Requires 8" between tire and frame	81560	AL	1	2	1																			
K-3500 1 Ton Pickup	1973	1987	4WD	Requires 8" between tire and frame																								
C & K-3500 1 Ton Pickup	1988	2000	2&4	Under 11,000 GVWR Does not fit if axle to frame distance is 7.25" or less																								
Canyon Z71	2004	2012	2WD																									
Canyon Z71 & Z85	2004	2012	4WD																									
Canyon	2015	2024	2&4	Does not fit diesel models																								
Envoy, Envoy EXT	2002	2009	4WD	Except factory air spring option																								
Jimmy	1969	1991	4WD	Requires 6" between tire and frame																								
Jimmy	1973	1991	2WD	Requires 6" between tire and frame	81560	AL	1	2	1																			
S-15 Pickup, Sonoma	1983	1993	4WD	All models																								
S-15 Pickup, Sonoma	1982	2003	2WD																									
Sierra 1500 Classic GMT 800 series	1999	2007	2WD	Requires 6" between tire and frame																								
Sierra 1500 Classic GMT 800 series	1999	2007	4WD	Requires 6" between the tire and frame - Does not fit QuadraSteer																								
Sierra 1500 GMT 900 series aka "Legacy"	2007	2019	2&4	Fits 69.3" & 78" bed only (does not fit work truck model). LoadLifter does not fit MagneRide.																								
Sierra 1500 GMT 900 series	2007	2018	2&4	Fits 97.8" bed lengths only. LoadLifter does not fit MagneRide.																								
Sierra 1500	2019	2024	2&4																									
Sierra 1500 Limited	2019	2019	2&4																									
Sierra 1500 AT4	2019	2024	4WD																									
Sierra 1500HD	2001	2005	2&4	59501: Requires 6" between tire and frame 57250 & 88250: Will fit most side-mount 5th wheel hitch applications																								
Sierra 2500 3/4 Ton Pickup	1999	2004	2&4	Except 2500 HD; will fit with most side-mount 5th wheel hitch applications. Will not fit with QuadraSteer.																								
Sierra 2500HD Pickup	2001	2010	2&4	Will fit most side-mount 5th wheel applications. Will not fit with QuadraSteer.																								
Sierra 2500HD Pickup	2011	2019	2WD	Will fit most side-mount 5th wheel applications																								
Sierra 2500HD Pickup	2011	2019	4WD	Will fit most side-mount 5th wheel applications																								
Sierra 2500HD	2020	2024	4WD	Fits most in bed hitches. Fits all puck style 5th wheel and gooseneck hitch mounts. May not work with frame side-mount 5th wheel and gooseneck hitches, review installation guide for reference. Does not fit the AT4X model.																								
Sierra 3500 1 Ton Pickup	2001	2010	2&4	Fits single-rear-wheel (SRW) and dual-rear-wheel (DRW) models. Will fit most side-mount 5th wheel applications. Will not fit cab & chassis; Will not fit with QuadraSteer.																								
Sierra 3500HD 1 Ton Pickup	2011	2019	2WD	Fits single-rear-wheel (SRW) and dual-rear-wheel (DRW) models. Will fit most side-mount 5th wheel applications. Will not fit cab & chassis.																								
Sierra 3500HD 1 Ton Pickup	2011	2019	4WD	Fits single-rear-wheel (SRW) and dual-rear-wheel (DRW) models. Will fit most side-mount 5th wheel applications. Will not fit cab & chassis.																								
Sierra 3500HD	2020	2024	4WD	Fits single-rear-wheel (SRW) & dual-rear-wheel (DRW) models. Does not fit comm. chassis vehicles. Fits most in bed hitches. Fits all puck style 5th wheel & gooseneck hitch mounts. May not work with frame side-mount 5th wheel & gooseneck hitches, review installation guide for reference.																								
Sierra 3500 Commercial Cab & Chassis	2001	2010																										
3500 Commercial Cab and Chassis	2011	2015	2&4																									
Suburban	1973	1991	2WD	May require exhaust modification	81560	AL	1	2	1																			

Add an Air Lift on-board air compressor system. See page 37 to learn more.

WirelessAIR



P/N 74000
P/N 74000EZ (with EZ Mount)

WirelessONE



P/N 25980
P/N 25980EZ (with EZ Mount)

WirelessONE Tank + EZ Mount



P/N 25981EZ

LoadController



Single P/N 25854
Dual P/N 25856

Kit Type Abbreviations

- Air Lift 1000 AL
- RideControl RC
- LoadLifter 5000 LL
- LoadLifter 5000 Ultimate U
- LoadLifter 7500 XL Ultimate XL

Features Key and Installation Scale

Features	Difficulty Level	Tools	Modification to Vehicle	Installation Time
Internal Jounce Bumper	Easy	Hand Tools	No metal drilling, grinding or removal of factory components.	1 Number of hours a typical professional installer will take to complete a full installation
Stainless Steel Attaching Hardware	Medium	Hand tools and drill	Drilling may be required. Removal or temporary disconnection of factory components may be required.	2
Anodized Aluminum Endcaps	Expert	Special tools required	Drilling, cutting and/or grinding required. Removal or temporary disconnection of factory components may be required.	3





Adjustable Load Support Applications



Application Information for All Air Lift Front Kits

Front (All Product Lines)



Rear



Rear



Rear



Rear



Rear



Rear

Model	Start Year	End Year	Drive	Notes	Front (All Product Lines)				Rear				Rear				Rear				Rear				Rear				
					Kit	TYPE	DIFFICULTY LEVEL	TOOLS	INSTALL TIME	Kit	DIFFICULTY LEVEL	TOOLS	INSTALL TIME	Kit	DIFFICULTY LEVEL	TOOLS	INSTALL TIME	Kit	DIFFICULTY LEVEL	TOOLS	INSTALL TIME	Kit	DIFFICULTY LEVEL	TOOLS	INSTALL TIME	Kit	DIFFICULTY LEVEL	TOOLS	INSTALL TIME
Suburban	1973	1991	4WD	May require exhaust modification													88221	🔧	🔧	🔧	🔧								
Suburban 1500 1/2 Ton	1992	1999	2&4										59518	🔧	🔧	🔧													
Suburban 2500 3/4 Ton	2000	2010	4WD	With leaf springs. Requires 6" between the tire and frame.									59526	🔧	🔧	🔧													
Terrain	2018	2024	F&A						60856	🔧	🔧	🔧																	
Yukon 2 Door Only	1992	1997	4WD										59518	🔧	🔧	🔧													
Yukon 4 Door	1995	2000	2&4	With leaf springs									59518	🔧	🔧	🔧													
Yukon or Yukon XL 1500	2000	2020	2&4	With coil springs. Will not fit factory-installed auto-leveling option.					60769	🔧	🔧	🔧																	
Yukon XL 2500 3/4 Ton	2000	2009	4WD	With leaf springs. Requires 6" between tire and frame.									59526	🔧	🔧	🔧													
GMC - Van																													
G-15 1/2 Ton Van	1970	1995		Requires 6" between tire and frame. May not fit with rear air/heat.	81560	AL	🔧	🔧	🔧	🔧					59526	🔧	🔧	🔧	🔧										
G-25, G-35 3/4 & 1 Ton Van	1970	1995			81560	AL	🔧	🔧	🔧	🔧									88105	🔧	🔧	🔧	🔧						
Safari Van	1995	2004		With steel multi-leaf suspensions									59521	🔧	🔧	🔧													
Savana G-1500 1/2 Ton Van	1996	2002		Requires 6" between tire and frame									59526	🔧	🔧	🔧													
Savana G-2500	1996	2002		Requires 6" between tire and frame. 7,300 GVWR and under.									59526	🔧	🔧	🔧													
Savana G-2500	1996	2023	2WD	Passenger van only; Boxed frame - Call for 2024													57205	🔧	🔧	🔧	🔧					88205	🔧	🔧	🔧
Savana G-3500	1996	2023	2WD	Passenger van only; Boxed frame - Call for 2024													57205	🔧	🔧	🔧	🔧					88205	🔧	🔧	🔧
Honda																													
CR-V	2017	2024	F&A						60834	🔧	🔧	🔧																	
Odyssey	1999	2004							60740	🔧	🔧	🔧																	
Odyssey	2005	2017	F&A	Fits front and all wheel drive					60815	🔧	🔧	🔧																	
Passport	1998	2002							60797	🔧	🔧	🔧																	
Pilot	2003	2004							60740	🔧	🔧	🔧																	
Pilot	2005	2009	F&A	Fits front and all wheel drive					60815	🔧	🔧	🔧																	
Hummer																													
Hummer H2/SUT Truck	2003	2009	4WD	Will not fit factory installed auto leveling option					60769	🔧	🔧	🔧																	
Hyundai																													
Palisade	2020	2024	F&A						60860	🔧	🔧	🔧																	
Santa-Fe	2020	2024	F&A						60860	🔧	🔧	🔧																	
Tucson	2016	2021	F&A						60860	🔧	🔧	🔧																	
Infiniti																													
QX4	1997	2004	4WD						60742	🔧	🔧	🔧																	
Isuzu																													
Amigo	1990	1993											59503	🔧	🔧	🔧													
Amigo	1998	1999							60797	🔧	🔧	🔧																	
Axion	2002	2004							60797	🔧	🔧	🔧																	
Pickup	1980	1994	2WD										59529	🔧	🔧	🔧													
Pickup	1995	1995	2WD										59502	🔧	🔧	🔧													
Pickup, Hombre	1996	2000	2WD										59529	🔧	🔧	🔧													
Rodeo	1991	1994											59503	🔧	🔧	🔧													
Rodeo	1998	2003							60797	🔧	🔧	🔧																	
Trooper	1992	2002							60783	🔧	🔧	🔧																	
Trooper II	1985	1991											59503	🔧	🔧	🔧													
Vehicross	1999	1999							60797	🔧	🔧	🔧																	

Add an Air Lift on-board air compressor system. See page 37 to learn more.

WirelessAIR



P/N 74000
P/N 74000EZ (with EZ Mount)

WirelessONE



P/N 25980
P/N 25980EZ (with EZ Mount)

WirelessONE Tank + EZ Mount



P/N 25981EZ

LoadController



Single P/N 25854
Dual P/N 25856

Kit Type Abbreviations

- Air Lift 1000 AL
- RideControl RC
- LoadLifter 5000 LL
- LoadLifter 5000 Ultimate U
- LoadLifter 7500 XL Ultimate XL

Features Key and Installation Scale

Features	Difficulty Level	Tools	Modification to Vehicle	Installation Time
Internal Jounce Bumper	Easy	Hand Tools	No metal drilling, grinding or removal of factory components.	1 Number of hours a typical professional installer will take to complete a full installation
Stainless Steel Attaching Hardware		Hand tools and drill	Drilling may be required. Removal or temporary disconnection of factory components may be required.	
Anodized Aluminum Endcaps	Medium	Special tools required	Drilling, cutting and/or grinding required. Removal or temporary disconnection of factory components may be required.	2
	Expert			3
				4





Adjustable Load Support Applications



Application Information for All Air Lift Front Kits



Up to 1,000 lbs. Load-Leveling Capacity*
2,100 lbs. for 1000HD*



Up to 2,000 lbs. Load-Leveling Capacity*



Up to 5,000 lbs. Load-Leveling Capacity*



Up to 5,000 lbs. Load-Leveling Capacity*
+20%



Up to 7,500 lbs. Load-Leveling Capacity*
+20%



Up to 5,000 lbs. Load-Leveling Capacity*

Model	Start Year	End Year	Drive	Notes	Front (All Product Lines)				Rear				Rear				Rear				Rear				Rear			
					Kit	TYPE	DIFFICULTY LEVEL	TOOLS	INSTALL TIME	Kit	DIFFICULTY LEVEL	TOOLS	INSTALL TIME	Kit	DIFFICULTY LEVEL	TOOLS	INSTALL TIME	Kit	DIFFICULTY LEVEL	TOOLS	INSTALL TIME	Kit	DIFFICULTY LEVEL	TOOLS	INSTALL TIME	Kit	DIFFICULTY LEVEL	TOOLS
Jeep/Eagle																												
Cherokee	2014	2023	F&4	Does not fit Trailhawk models						60863	AL	1	1															
Cherokee Trailhawk	2014	2023	4WD	Fits Trailhawk models only						60864	AL	1	1															
CJ Series & Scrambler	1972	1986												59503	1	1	2											
Comanche	1986	1993						80702	AL	1	1	2					59503	1	1	2								
Commander	2006	2010	4WD	No fit for front kit						60811	1	1	1															
Custom & Grand Wagoneer	1984	1991												59507	1	1	2											
Eagle Summit	1992	1993		Station wagon only						60776	1	1	1															
Gladiator	2020	2024	4WD							60830	1	1	2															
Grand Cherokee	1999	2004								60754	1	1	1															
Grand Cherokee	2005	2010	4WD	Does not fit SRT models						60811	1	1	1															
Grand Cherokee	2011	2024	2&4	Does not fit Jeep Quadra-Lift equipped and SRT-8 vehicles						60825	1	1	1															
Grand Cherokee L	2021	2024	2&4							60861	1	1	2.5															
Grand Wagoneer, Grand Cherokee	1992	1998		Except "Up Country" models				80702	AL	1	1	2																
Wagoneer, Cherokee	1992	2002		Also fits Sport model										59507	1	1	2											
Wrangler (including Rubicon)	1997	2006						80702	AL	1	1	2					60811	1	1	1								
Wrangler	2007	2018	2&4	including Unlimited 4-door. JK only						60817	1	1	1															
Wrangler	2018	2024	4WD	JL only						60829	1	1	1															
XJ-Wagoneer, XJ-Cherokee, Pioneer	1984	1991						80702	AL	1	1	2					59507	1	1	2								
Kia																												
Sorrento	2016	2019	F&A							60860	1	1	1															
Sportage	2016	2022	F&A							60860	1	1	1															
Telluride	2020	2024	F&A							60860	1	1	1															
Lexus																												
LX 450-470	1996	2002								60728	1	1	1															
GX460	2010	2020		Does not fit factory air suspension						60804	1	1	3															
Lincoln - Car																												
Continental	1982	1988		Excl. vehicles w/ factory air suspension						60783	1	1	1															
Mark VII	1984	1987		Excl. vehicles w/ factory air suspension						60783	1	1	1															
Towncar	1980	1989								60769	1	1	1															
Lincoln - Truck/SUV																												
Aviator	2020	2024	AWD	Does not fit factory air equipped vehicles						60855	1	1	2															
Mark LT	2005	2009	2&4											59544	1	1	1											
MKX	2007	2015	2&4							60819	1	1	3.5															
MKS	2010	2016	2&4							60821	1	1	1															
MKT	2010	2016	2&4							60821	1	1	1															
Nautilus	2019	2024	AWD							60854	1	1	1															

Add an Air Lift on-board air compressor system. See page 37 to learn more.

WirelessAIR



P/N 74000
P/N 74000EZ (with EZ Mount)

WirelessONE



P/N 25980
P/N 25980EZ (with EZ Mount)

WirelessONE Tank + EZ Mount



P/N 25981EZ

LoadController



Single P/N 25854
Dual P/N 25856

Kit Type Abbreviations

- Air Lift 1000 AL
- RideControl RC
- LoadLifter 5000 LL
- LoadLifter 5000 Ultimate U
- LoadLifter 7500 XL Ultimate XL

Features Key and Installation Scale

Features	Difficulty Level	Tools	Modification to Vehicle	Installation Time
Internal Jounce Bumper	Easy	Hand Tools	No metal drilling, grinding or removal of factory components.	1 Number of hours a typical professional installer will take to complete a full installation 2 3 4
Stainless Steel Attaching Hardware		Hand tools and drill	Drilling may be required. Removal or temporary disconnection of factory components may be required.	
Anodized Aluminum Endcaps	Expert	Special tools required	Drilling, cutting and/or grinding required. Removal or temporary disconnection of factory components may be required.	
Up to 20% more volume than LoadLifter 5000				



Adjustable Load Support Applications

Air Lift Front Kits

(Representative front kit image)



Application Information for All Air Lift Front Kits

Front (All Product Lines)

Air Lift 1000 & Air Lift 1000 HD



Up to 1,000 lbs. Load-Leveling Capacity*
2,100 lbs. for 1000HD*

RideControl



Up to 2,000 lbs. Load-Leveling Capacity*

LoadLifter 5000



Up to 5,000 lbs. Load-Leveling Capacity*

LoadLifter 5000 ULTIMATE



Up to 5,000 lbs. Load-Leveling Capacity*

LoadLifter 7500 XL ULTIMATE



Up to 7,500 lbs. Load-Leveling Capacity*

Air Lift ProSeries



Up to 5,000 lbs. Load-Leveling Capacity*

Model	Start Year	End Year	Drive	Notes	Front (All Product Lines)				Rear				Rear				Rear				Rear				Rear			
					Kit	TYPE	DIFFICULTY LEVEL	TOOLS	INSTALL TIME	Kit	DIFFICULTY LEVEL	TOOLS	INSTALL TIME	Kit	DIFFICULTY LEVEL	TOOLS	INSTALL TIME	Kit	DIFFICULTY LEVEL	TOOLS	INSTALL TIME	Kit	DIFFICULTY LEVEL	TOOLS	INSTALL TIME	Kit	DIFFICULTY LEVEL	TOOLS
Mazda																												
MPV Van	1996	1998							60776																			
Pickup	1972	1993	2&4	All models										59503														
Pickup	1994	1997	2WD	All models										59516														
Pickup	1994	1997	4WD	All models										59516														
Pickup	1998	2010	2&4	All models										59516														
Mercury - Car																												
Cougar	1989	1991							60789																			
Cougar	1992	1997							60776																			
Grand Marquis	1998	2006							60798																			
Grand Marquis, Colony Park	1983	1997		Including station wagon					60769																			
Sable Station Wagon	1986	2005							60776																			
Mitsubishi																												
Expo	1992	1993							60776																			
Montero	1990	2000							60747																			
Montero Sport	1997	1998	4WD											59503														
Montero Sport	1999	2004	4WD						60747																			
Pickup	1983	1993	2WD											59529														
Raider	2006	2009	2&4											59555														
Nissan																												
Frontier	1998	1998	2WD											59503														
Frontier	2013	2024	4WD														57244											
Murano	2003	2024	F&A						60774																			
Pathfinder	1987	1995	4WD						60783																			
Pathfinder	1996	2004	4WD						60742																			
Pathfinder	2005	2012	4WD						60810																			
Pathfinder	2013	2024	2&4						60838																			
Pathfinder Armada	2004	2006	4WD						60807																			
Pickup	1969	1997	2WD											59529														
Rogue	2014	2020	F&A						60836																			
Rogue	2021	2024	AWD						60837																			
Titan	2004	2015	2&4											59554														
Titan	2017	2024	2&4														57331								88331			
Titan XD	2016	2023	2&4														57229								88229			
Xterra	2005	2015	4WD											59562														

Add an Air Lift on-board air compressor system. See page 37 to learn more.

WirelessAIR



P/N 74000
P/N 74000EZ (with EZ Mount)

WirelessONE



P/N 25980
P/N 25980EZ (with EZ Mount)

WirelessONE Tank + EZ Mount



P/N 25981EZ

LoadController



Single P/N 25854
Dual P/N 25856

Kit Type Abbreviations

- Air Lift 1000 [AL]
- RideControl [RC]
- LoadLifter 5000 [LL]
- LoadLifter 5000 Ultimate [U]
- LoadLifter 7500 XL Ultimate [XL]

Features Key and Installation Scale

Features	Difficulty Level	Tools	Modification to Vehicle	Installation Time
Internal Jounce Bumper	Easy	Hand Tools	No metal drilling, grinding or removal of factory components.	1 Number of hours a typical professional installer will take to complete a full installation
Stainless Steel Attaching Hardware		Hand tools and drill	Drilling may be required. Removal or temporary disconnection of factory components may be required.	
Anodized Aluminum Endcaps	Medium	Special tools required	Drilling, cutting and/or grinding required. Removal or temporary disconnection of factory components may be required.	2
	Expert			3
				4

Adjustable Load Support Applications



Application Information for All Air Lift Front Kits



Up to 1,000 lbs. Load-Leveling Capacity*
2,100 lbs. for 1000HD*



Up to 2,000 lbs. Load-Leveling Capacity*



Up to 5,000 lbs. Load-Leveling Capacity*



Up to 5,000 lbs. Load-Leveling Capacity*



Up to 7,500 lbs. Load-Leveling Capacity*
+20%



Up to 5,000 lbs. Load-Leveling Capacity*

Model	Start Year	End Year	Drive	Notes	Front (All Product Lines)				Rear				Rear				Rear				Rear				Rear			
					Kit	TYPE	DIFFICULTY LEVEL	TOOLS	INSTALL TIME	Kit	DIFFICULTY LEVEL	TOOLS	INSTALL TIME	Kit	DIFFICULTY LEVEL	TOOLS	INSTALL TIME	Kit	DIFFICULTY LEVEL	TOOLS	INSTALL TIME	Kit	DIFFICULTY LEVEL	TOOLS	INSTALL TIME	Kit	DIFFICULTY LEVEL	TOOLS
Oldsmobile - Car																												
Achieva	1992	1998							60789	AL	1																	
Aurora	1995	2004							60776	AL	1																	
Custom Cruiser Station Wagon	1977	1993							60755	AL	1																	
Custom Cruiser Station Wagon	1984	1995	FWD						60797	AL	1																	
Cutlass	1964	1966		Including station wagon and Vista Cruiser					60750	AL	1																	
Cutlass Calais	1985	1991	FWD						60789	AL	1																	
Cutlass Calais	1982	1996							60797	AL	1																	
Cutlass, Cutlass Supreme, Calais	1973	1987		Excluding station wagon					60733	AL	1																	
Cutlass, F-85, 442	1967	1972		Excluding station wagon					60744	AL	1																	
Delta 88, 98, Regency	1985	1999	FWD						60798	AL	1																	
LS Sedan	1996	1999							60798	AL	1																	
Oldsmobile - SUV/Van																												
Bravada	1991	1994												59503	AL	1												
Bravada	2002	2004		Except factory air spring option					60779	AL	1																	
Silhouette APV	1997	2004							60748	AL	1																	
Plymouth - Car																												
Acclaim	1989	1995							60776	AL	1																	
Reliant	1981	1994							60776	AL	1																	
Sundance	1987	1993							60776	AL	1																	
Pontiac - Car																												
6000	1982	1991							60797	AL	1																	
Bonneville	1987	1999	FWD						60798	AL	1																	
Bonneville	2000	2005							60776	AL	1																	
Firebird, Trans Am	1982	2002							60797	AL	1																	
Grand Am	1985	1998							60789	AL	1																	
Grand Am, Grand LeMans, LeMans	1973	1982		Including station wagon					60733	AL	1																	
Grand Prix	1965	1968							60733	AL	1																	
Grand Prix	1969	1972							60744	AL	1																	
Grand Prix	1973	1987							60733	AL	1																	
J-2000, Sunbird	1982	1994		Including station wagon					60789	AL	1																	
LeMans	1988	1992							60789	AL	1																	
LeMans, Tempest, GTO, GT37	1967	1972		Excluding station wagon					60744	AL	1																	
Safari Station Wagon	1987	1989							60755	AL	1																	
Tempest, GTO	1964	1966		Including station wagon					60750	AL	1																	
Pontiac - Van																												
Transport APV Van, Montana	1997	2005							60748	AL	1																	
Saab																												
99, 900	1970	1991							60756	AL	1																	

Add an Air Lift on-board air compressor system. See page 37 to learn more.

WirelessAIR



P/N 74000
P/N 74000EZ (with EZ Mount)

WirelessONE



P/N 25980
P/N 25980EZ (with EZ Mount)

WirelessONE Tank + EZ Mount



P/N 25981EZ

LoadController



Single P/N 25854
Dual P/N 25856

Kit Type Abbreviations

- Air Lift 1000 AL
- RideControl RC
- LoadLifter 5000 LL
- LoadLifter 5000 Ultimate U
- LoadLifter 7500 XL Ultimate XL

Features Key and Installation Scale

Features	Difficulty Level	Tools	Modification to Vehicle	Installation Time
Internal Jounce Bumper	Easy	Hand Tools	No metal drilling, grinding or removal of factory components.	1 Number of hours a typical professional installer will take to complete a full installation 2 3 4
Stainless Steel Attaching Hardware		Hand tools and drill	Drilling may be required. Removal or temporary disconnection of factory components may be required.	
Anodized Aluminum Endcaps	Expert	Special tools required	Drilling, cutting and/or grinding required. Removal or temporary disconnection of factory components may be required.	
Up to 20% more volume than LoadLifter 5000				

Adjustable Load Support Applications

Air Lift Front Kits

(Representative front kit image)



Application Information for All Air Lift Front Kits

Front (All Product Lines)

Air Lift 1000 & Air Lift 1000 HD

 Up to 1,000 lbs. Load-Leveling Capacity*
 2,100 lbs. for 1000HD*

RideControl



Up to 2,000 lbs. Load-Leveling Capacity*

LoadLifter 5000



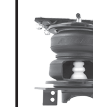
Up to 5,000 lbs. Load-Leveling Capacity*

LoadLifter 5000 ULTIMATE



Up to 5,000 lbs. Load-Leveling Capacity*

LoadLifter 7500 XL ULTIMATE



Up to 7,500 lbs. Load-Leveling Capacity*

Air Lift ProSeries



Up to 5,000 lbs. Load-Leveling Capacity*

Model	Start Year	End Year	Drive	Notes	Front (All Product Lines)				Rear				Rear				Rear				Rear				Rear						
					Kit	TYPE	DIFFICULTY LEVEL	TOOLS	INSTALL TIME	Kit	DIFFICULTY LEVEL	TOOLS	INSTALL TIME	Kit	DIFFICULTY LEVEL	TOOLS	INSTALL TIME	Kit	DIFFICULTY LEVEL	TOOLS	INSTALL TIME	Kit	DIFFICULTY LEVEL	TOOLS	INSTALL TIME	Kit	DIFFICULTY LEVEL	TOOLS	INSTALL TIME		
Saturn																															
Outlook	2007	2011	F&A						60816	🔧	🔧	🔧	🔧	2																	
Scion																															
Scion xB	2005	2006							60774	🔧	🔧	🔧	🔧	1																	
Suzuki																															
Grand Vitara, Vitara, XL-7	1999	2005	4WD						60793	🔧	🔧	🔧	🔧	1																	
Sidekick, 2 Door	1989	1998							60793	🔧	🔧	🔧	🔧	1																	
Toyota - Truck/SUV																															
4 Runner	1990	1995	4WD						60812	🔧	🔧	🔧	🔧	1																	
4 Runner	1996	2002	2&4						60743	🔧	🔧	🔧	🔧	1																	
4 Runner	2003	2009	4WD						60809	🔧	🔧	🔧	🔧	1																	
4 Runner	2010	2023	4WD	Does not fit factory air suspension					60804	🔧	🔧	🔧	🔧	3																	
FJ Cruiser	2007	2014	4WD						60809	🔧	🔧	🔧	🔧	1																	
Land Cruiser	1991	2006							60728	🔧	🔧	🔧	🔧	1																	
Pickup	1969	1995	2WD												59502	🔧	🔧	🔧	🔧	2											
Pickup	1969	1995	4WD	Except extended cab											59502	🔧	🔧	🔧	🔧	2											
RAV4	1996	2000	2&4						60789	🔧	🔧	🔧	🔧	1																	
RAV4	2006	2018	4WD						60840	🔧	🔧	🔧	🔧	2																	
RAV4	2019	2023	4WD						60842	🔧	🔧	🔧	🔧	2																	
RAV4	2022	2023	2WD						60842	🔧	🔧	🔧	🔧	2																	
Sequoia	2001	2007	2&4						60812	🔧	🔧	🔧	🔧	1																	
Sequoia	2011	2022	4WD	Does not fit Platinum platforms with air suspension					60826	🔧	🔧	🔧	🔧	1																	
Sequoia SR-5	2008	2018	2&4	Does not fit the auto leveling option					60786	🔧	🔧	🔧	🔧	1																	
T-100 Pickup	1993	1998	4WD												59503	🔧	🔧	🔧	🔧	2											
T-100 Pickup	1993	1998	2WD	All models											59502	🔧	🔧	🔧	🔧	2											
Tacoma	1995	2004	2WD												59503	🔧	🔧	🔧	🔧	2											
Tacoma	1995	2004	4WD												59537	🔧	🔧	🔧	🔧	2											
Tacoma	2005	2023	2WD	Fits axle over leaf design models only											59564	🔧	🔧	🔧	🔧	1											
Tacoma	2005	2023	4WD																		57300	🔧	🔧	🔧	2.5						
Tacoma	2005	2023	2WD	Fits leaf over axle design models only																	57300	🔧	🔧	🔧	2.5						
Tundra	2000	2006	2&4	Does not fit Tundra equipped w/ TRD package sporting 275/65-18 wheels & tires											59530	🔧	🔧	🔧	🔧	1											
Tundra	2007	2021	2&4	May not work with some 5th wheel hitches																					88299	🔧	🔧	1			
Tundra	2022	2024	2&4	Does not fit factory air suspension or 5th wheel hitches																				57383	🔧	🔧	3	88383	🔧	🔧	3
Toyota - Van																															
Sienna	2004	2020	2&4						60732	🔧	🔧	🔧	🔧	1																	
Volkswagen																															
EuroVan	1985	2003							60789	🔧	🔧	🔧	🔧	1																	
Routan	2008	2014	2WD						60814	🔧	🔧	🔧	🔧	2																	

Add an Air Lift on-board air compressor system. See page 37 to learn more.

WirelessAIR


 P/N 74000
 P/N 74000EZ (with EZ Mount)

WirelessONE


 P/N 25980
 P/N 25980EZ (with EZ Mount)

WirelessONE Tank + EZ Mount



P/N 25981EZ

LoadController


 Single P/N 25854
 Dual P/N 25856

Kit Type Abbreviations

Air Lift 1000	AL
RideControl	RC
LoadLifter 5000	LL
LoadLifter 5000 Ultimate	U
LoadLifter 7500 XL Ultimate	XL

Features Key and Installation Scale

Features	Difficulty Level	Tools	Modification to Vehicle	Installation Time
Internal Jounce Bumper	Easy	Hand Tools	No metal drilling, grinding or removal of factory components.	1 Number of hours a typical professional installer will take to complete a full installation
Stainless Steel Attaching Hardware		Hand tools and drill	Drilling may be required. Removal or temporary disconnection of factory components may be required.	
Anodized Aluminum Endcaps	Medium	Special tools required	Drilling, cutting and/or grinding required. Removal or temporary disconnection of factory components may be required.	3
	Expert			



SLAMAIR™ / DRAG BAGS

SlamAir Applications for Lowered Vehicles								
Model	Start Year	End Year	Drive	Notes	2" - 4" Rear Kit	Replacement Bag	5" - 6" Rear Kit	Replacement Bag
Chevrolet/GMC								
1/2 Ton Full Size Truck	1988	1998	2WD		59103	50254	59106BT	50203
3/4 Ton Truck	1988	2000	2WD	Classic Only	no fit	no fit	59202	50207
1 Ton Truck	1988	2000	2WD		no fit	no fit	59202	50207
Astro Van	1995	2004	2WD	Multi-leaf		50254	no fit	no fit
Silverado/Sierra 1/2 Ton Pickup	1993	2008	2WD	Except 1500 HD	59103	50254	no fit	no fit
Silverado/Sierra GMT 800	1999	2007	2WD	Fits 4-6" drops only	59209	50266	59209	50266
Silverado/Sierra GMT 900	2007	2018	2WD	Fits 4-6" drops only; Does not fit long bed	59209	50266	59209	50266
Ford								
1/2 Ton Full Size Truck	1970	2004	2WD	For 2004, fits Heritage model only	59103	50254	no fit	no fit
F-150	2004	2014	2&4	New body, excludes Heritage models	59210	50266	59210	50266
Dodge								
1/2 Ton Full Size Truck	1969	2001	2WD		59103	50254	no fit	no fit
1500	2002	2008	2WD	Fits 4-6" drops only	59113	50259	59113	50259
Lincoln								
Mark LT	2005	2009	2&4		59210	50266	59210	50266
Mazda								
Pickup	1998	2009	2WD		59103	50254	no fit	no fit

*Does not fit if top of leaf to bottom of the frame is less than 8.5"

Drag Bags Applications												
Model	Start Year	End Year	Front Kit	Front Repl. Bag Only	TOOLS	INSTALL TIME	Rear Kit	Rear Repl. Bag Only	TOOLS	INSTALL TIME		
Buick												
Deluxe, Special, Skylark	1967	1972					60844	60844	⊗	1		
Regal, Century, Gran Sport	1973	1987					60844	60844	⊗	1		
Chevrolet												
Camaro Z-28, IROC-Z	1982	2002					60897	60897	⊗	1		
Chevelle, Malibu, SS, "300"	1967	1972					60844	60844	⊗	1		
Chevelle, Malibu, Laguna (incl. Station Wagon)	1973	1983					60844	60844	⊗	1		
El Camino	1967	1987					60844	60844	⊗	1		
Monte Carlo	1973	1988					60844	60844	⊗	1		
Monte Carlo SS	1984	1988					60844	60844	⊗	1		
Ford												
Mustang	1979	2004					60897	60897	⊗	1		
Oldsmobile												
Cutlass, F-85, 442 (excl. Station Wagon)	1967	1972					60844	60844	⊗	1		
Cutlass	1973	1988					60844	60844	⊗	1		
Pontiac												
Firebird, Trans Am	1982	2002					60897	60897	⊗	1		
Grand Am, LeMans	1973	1982					60844	60844	⊗	1		
Grand Prix	1969	1972					60844	60844	⊗	1		
Grand Prix	1973	1987					60844	60844	⊗	1		
GTO, LeMans, Tempest, Judge, Custom "S" (excl. station wagon)	1967	1972					60844	60844	⊗	1		

MOTORHOMES / RV / STEP VANS



Motorhome/RV/Step Van Applications														
Model	Start Year	End Year	Notes	Front Kit	Front Repl. Bag Only	TOOLS	INSTALL TIME	Std. Rear Kit	Std. Rear Repl. Bag Only	Ultimate Rear Kit	Ultimate Rear Repl. Bag Only	TOOLS	INSTALL TIME	
Chevrolet														
G-30 Class "C"	1970	1995		81560	81260	⊗	1			88105	84264	⊗	2	
G-3500 Cutaway Chassis	1998	2012	No fit for '96-'97					57245	50252	88245	84252	⊗	2	
G-4500 Cutaway Chassis	2009	2012						57245	50252	88245	84252	⊗	2	
GP-30 Cutaway Chassis	1993	1995		81560	81260	⊗	1			88203	84284	⊗	2	
5500 Cutaway Chassis/ C4500	2004	2009						57292	50329			⊗	2	
W20/W22/W24	2002	2009	GVWR 20,000-24,000	88101	50252 84252	⊗	1			88202	84201	⊗	2	
Workhorse W-18	2000	2009	18,000 GVWR only	81560	81260	⊗	1							
Workhorse W-16	2005	2009	10,500-17,000 GVWR	81560	81260	⊗	1							
P-30, P-32	1993	2005	Over 14,500 GVWR	81560	81260	⊗	1			88219	84201		2	
P-30, P-32	1963	1999	93-'99 14,500 GVWR and under	81560	81260	⊗	1			88203	84284	⊗	2	
Ford														
E-350 Class "C"	1975	2024								88138	84264	⊗	2	
E-450 Super Duty Class "C"	1996	2008	Under frame kit for up to 14,050 GVWR					57131	50201	88131	84201	⊗	2	
E-450 Super Duty Class "C"	1996	2022	Side mount kit for maximum load & stability with GVWR over 14,050; Requires 8" between tire and frame.					57242	50251	88242	84251	⊗	2	
F-53 Class "A"	1990	1997		57140 88140	50252 84252	⊗	2			88208	84201	⊗	2	
F-53 Class "A"	1998	2008	Does not fit 26,000 GVWR. Requires 9" between the tire and frame.	57140 88140	50252 84252	⊗	2	57410	50229			⊗	2	
F-53 Class "A" Commercial Chassis	2009	2024	Does not fit 24,000 & 26,000 GVWR. Requires 8" between the tire and frame.	88240	84264	⊗	1.5	57344	50201	88344	84251	⊗	2	
Toyota														
Micro Mini	1986	1994						57113	50252	88113	84252	⊗	2	



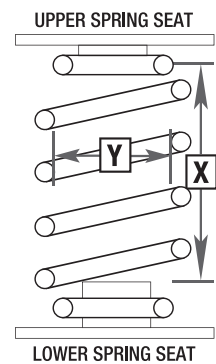
Air Lift 1000 Universal Air Springs		
Kit #	Min. Diameter (Y)	Min. Length (X)
60900	3.00"	5.50"
60901	3.00"	8.00"
60902	3.00"	9.00"
60903	3.50"	5.26"
60904	3.50"	7.75"
60905	3.50"	9.50"
60906	4.00"	5.00"
60907	4.00"	6.00"
60908	4.00"	7.00"
60909	4.00"	8.00"
60910	4.00"	9.00"
60911	4.00"	10.00"
60914	4.50"	6.50"
60915	4.50"	7.50"
60916	4.50"	9.00"
60917	4.50"	10.00"
60918	5.00"	5.25"
60919	5.00"	7.00"
60920	5.00"	9.00"
60921	5.00"	11.00"
60922	5.50"	5.50"
60923	5.50"	7.50"
60924	5.50"	8.50"
60925	5.50"	9.50"
60926	5.50"	10.50"
60927	5.50"	11.50"

We have a kit for almost any coil-sprung vehicle

Can't find an air spring kit for a coil-sprung vehicle? Air Lift 1000 Universal Air Spring Kits fit almost any open coil spring to provide up to 1,000 lbs. of load-leveling support*. Just take two simple measurements and use the chart below to find the correct kit for your application.

Finding the correct application is as easy as 1-2-3!

- 1. Unload the vehicle** in order to take the most accurate measurements of the coil springs. Once the vehicle is at normal ride height, then move on to step two.
- 2. Take two measurements.** Measure the inside height (X) — the available height within the coil spring. Then, measure the inside diameter (Y), or the width available inside the coil from side to side at its widest point (see diagram).
- 3. Find the corresponding part number.** Using the chart on the right, find the row that contains the correct inside height and inside diameter, and see which part number lines up with those values. It is better to be slightly undersized than oversized.



Air Lift 1000 Universal Air Spring Kits contain everything needed for a full installation!

- Two Air Lift 1000 air springs
- Air spring spacers (if applicable)
- Two heat shields with clamps
- Air line, tee, zip ties and two Schrader valves
- Detailed installation guide with advice for a proper installation

* Never exceed manufacturer's recommended Gross Vehicle Weight Rating.

Compressor Systems		
Features	SINGLE-PATH Controlling two air springs together	DUAL-PATH Controlling two air springs independently
WIRELESS <ul style="list-style-type: none"> • Wireless controller with exterior-mounted compressor and manifold • Programmable preset positions • Adjust to tune the ride • Easier to install...no gauges to mount <p><i>Also available as an Upgrade Kit for your existing WirelessOne or WirelessAir System!</i></p>	WirelessONE Tank + EZ Mount P/N 25981EZ NEW!	WirelessAIR Tank + EZ Mount P/N 74100EZ NEW!
NEW! <p>P/N 25981 Upgrade Kit (WirelessOne) P/N 74100 Upgrade Kit (WirelessAir)</p>	WirelessONE P/N 25980 <p>WirelessONE with EZ MOUNT™ P/N 25980EZ</p> <p>Manifold and upgraded compressor together in one bracketed assembly.</p>	WirelessAIR P/N 74000 <p>WirelessAIR with EZ MOUNT™ P/N 74000EZ</p> <p>Manifold and upgraded compressor together in one bracketed assembly.</p>
COMPACT & PANEL ANALOG <ul style="list-style-type: none"> • In-cab mountable controller connected via air lines to exterior mounted compressor • One-touch button control • Low pressure sensor • Heavy-duty compressor option (Compact) and Standard-duty compressor option (Panel) <p>Single- and Dual-Path gauges come with a mounting pod or can easily fit into A-pillar pod or can be flush mounted.</p>	LoadController Compact <p>Heavy-duty P/N 25854</p>	LoadController Panel <p>Standard-duty P/N 25592</p>
		LoadController Compact <p>Heavy-duty P/N 25856</p> <p>Single- and Dual-Path gauges come with a mounting pod.</p>

Accessories		
Model	Notes	Kit Number
Universal Air Spring Spacers for ProSeries and LoadLifter Kits		
Universal Air Spring Cradle NEW!	Kit includes 2 universal air spring spacers made from durable and lightweight engineered resin plus all attaching hardware	52500
Air Spring Spacer — 2" spacer	Includes all hardware; Does not fit RideControl	52420 — straight
Air Spring Spacer — 4" spacer (available in straight and angled versions)	Includes all hardware; Does not fit RideControl	52440 — straight 52445 — angled
Air Spring Spacer — 6" spacer (available in straight and angled versions)	Includes all hardware; Does not fit RideControl	52460 — straight 52465 — angled
Visit Air-Lift.co/spacer for more information on how to choose the right spacer for your application.		
Replacement Hose Kits		
Hose Cutter		10530
Replacement Hose Kit - Push-on (607xx & 807xx Series)		22007
P-30 Hose Kit		22022
Replacement Hose Kit (605xx & 805xx Series)		22030
Other Accessories		
160 PSI Air Shock Controller		25804



REPLACEMENT AIR SPRINGS

Kit	Replacement Air Spring
57132	50252
57147	50252
57154	50252
57200	50298
57204	50297
57205	50252
57211	50297
57212	50201
57213	50290
57215	50201
57216	50201
57228	50298
57229	50201
57230	50235
57231	50201
57233	50251
57234	50772
57237	50201
57242	50251
57244	50225
57245	50252
57250	50201
57257	50293
57268	50205
57272	50298
57275	50290
57284	50205
57286	50290
57288	50217
57289	50293
57291	50201
57292	50229
57295	50293
57297	50217
57298	50201
57300	50225
57331	50771
57338	50297
57340	50251
57341	50297
57345	50229
57347	50201
57349	50201
57350	50293
57352	50293
57355	50385
57365	50293
57375	50293
57380	50293
57383	50383
57385	50385
57388	50293

Kit	Replacement Air Spring
57389	50389
57390	50201
57393	50201
57395	50201
57396	50201
57397	50201
57398	50201
57399	50293
57409	50201
57531	50236
57538	50236
57541	50236
57550	50236
57552	50236
57575	50236
57577	50236
57580	50236
57589	50236
57595	50236
57596	50236
59501	50203
59502	50255
59503	50208
59507	50269
59508	50203
59516	50259
59518	50259
59521	50269
59526	50256
59529	50202
59530	50291
59533	50292
59537	50256
59539	50203
59544	50270
59547	50254
59551	50203
59554	50256
59555	50203
59561	50254
59562	50259
59564	50256
59565	50203
59568	50203
59570	50736
60713	60213
60724	60724
60728	60728
60732	60232
60733	60733
60740	60740
60742	60742

Kit	Replacement Air Spring
60743	60743
60744	60744
60747	60747
60748	60748
60750	60750
60754	60754
60755	60755
60756	60756
60769	60269
60774	60774
60776	60776
60779	60779
60783	60783
60786	60786
60789	60789
60793	60793
60797	60797
60798	60798
60804	60804
60807	60807
60808	60808
60809	60809
60810	60810
60811	60811
60812	60812
60814	60814
60815	60315
60816	60816
60817	60317
60818	60318
60819	60819
60821	60821
60822	60322
60824	60824
60825	60825
60826	60826
60828	60328
60829	60829
60830	60830
60834	60834
60836	60836
60837	60837
60838	60838
60840	60840
60842	60842
60852	60852
60854	60854
60855	60355
60856	60856
60857	60857
60858	60858
60859	60859

Kit	Replacement Air Spring
60860	60860
60861	60861
60863	60363
60864	60364
60865	60365
61741	61241
61792	61792
80702	80702
81560	81260
88101	84252
88105	84264
88113	84252
88128	84252
88129	84252
88131	84201
88132	84252
88138	84264
88140	84252
88147	84252
88154	84252
88200	84298
88202	84201
88204	84297
88205	84252
88208	84201
88211	84297
88212	84201
88213	84290
88215	84201
88216	84201
88217	84201
88219	84201
88221	84201
88228	84298
88229	84201
88230	84235
88231	84201
88233	84251
88234	84772
88237	84201
88242	84251
88245	84252
88250	84201
88255	84293
88257	84293
88268	84205
88272	84298
88275	84290
88284	84205
88286	84290
88288	84217
88289	84293

Kit	Replacement Air Spring
88291	84201
88295	84293
88297	84294
88298	84201
88299	84264
88331	84771
88338	84297
88339	84297
88340	84251
88341	84297
88344	84251
88347	84201
88349	84201
88350	84293
88352	84293
88355	84385
88365	84293
88375	84293
88380	84293
88383	84383
88385	84385
88388	84293
88389	84389
88390	84201
88393	84201
88395	84201
88396	84201
88397	84201
88398	84201
88399	84293
88412	84298
88413	84298
89200	84412
89204	84301
89215	84301
89275	84301
89288	84325
89289	84301
89295	84301
89338	84301
89365	84301
89385	84585
89388	84301
89396	84301
89398	84301
89399	84301
89412	84412
89413	84412
89231	84301
89355	84585
89350	84301
89375	84301

AIR LIFT PROSERIES REPLACEMENT AIR SPRINGS

Kit	Replacement Air Spring
94200	86005
94204	86005
94212	86005
94215	86005
94216	86005
94228	86005
94229	86005
94231	86005
94234	86004
94268	86004
94272	86005
94275	86005
94288	86004

Kit	Replacement Air Spring
94289	86005
94295	86005
94299	86003
94338	86005
94341	86005
94350	86005
94352	86005
94355	86006
94365	86005
94375	86005
94385	86005
94388	86005
94390	86005

Kit	Replacement Air Spring
94391	86005
94395	86005
94396	86005
94398	86005
94399	86005
93200	86001
93204	86001
93212	86001
93215	86001
93216	86001
93228	86001
93229	86001
93231	86001

Kit	Replacement Air Spring
93234	86002
93268	86002
93272	86001
93275	86001
93288	86002
93289	86001
93295	86001
93338	86001
93341	86001
93350	86001
93352	86001
93355	86001
93365	86001

Kit	Replacement Air Spring
93375	86001
93380	86001
93385	86001
93388	86001
93390	86001
93391	86001
93395	86001
93396	86001
93398	86001
93399	86001

NOTE: Replacement air spring kits include one (1) air spring and the hardware to attach the replacement air spring to the brackets.

AIR SPRING SPECIFICATIONS



Refer to this chart to find the correct air spring for your application.



Description	P/N	Max Ext. Height	Comp Height	Max Dia.	Design Height	Air Fitting Size (NPTF)	Top Fastener	Bottom Fastener	Mtg. Hole Centers
Sleeves									
Sleeve 3.0"	58988	8.0	3.6	3.25	5.0-6.0	1/8"	3/4" - 16	3/8" - 24	N/A
Sleeve 4.0"	58482	7.0	2.4	4.6	4.0-6.0	1/8"	3/4" - 16	1/2" - 13	N/A
Sleeve 4.5***	58483	6.25	2.6	5.1	4.0-5.75	1/8"	3/4" - 16	1/2" - 13	N/A
Sleeve 4.0"	58287	8.75	3.1	4.6	5.5-7.5	1/8"	3/4" - 16	1/2" - 13	N/A
Sleeve 4.0***	58430	8.75	3.3	4.6	5.0-8.0	1/8"	3/4" - 16	1/2" - 13	N/A
Sleeve 4.5***	58387	6.75	2.6	5.1	4.0-6.0	1/8"	3/4" - 16	1/2" - 13	N/A
Sleeve 4.5"	58487	6.8	2.4	5.1	4.0-6.0	1/8"	3/4" - 16	1/2" - 13	N/A
Sleeve 4.5***	58587	7.75	3.3	5.1	4.5-7.0	1/8"	3/4" - 16	1/2" - 13	N/A
Sleeve 4.5"	58987	7.75	3.1	5.1	4.5-7.0	1/8"	3/4" - 16	1/2" - 13	N/A
Sleeve 4.5"	58486	9.75	3.1	5.1	6.0-8.0	1/8"	3/4" - 16	1/2" - 13	N/A
Sleeve 4.0"	58586	9.91	3.1	4.6	6.0-8.5	1/8"	3/4" - 16	1/2" - 13	N/A
Sleeve 4.0"	58786	10.25	3.1	4.6	7.5-9.5	1/8"	3/4" - 16	1/2" - 13	N/A
Sleeve 4.5"	58571	10.25	3.1	5.1	6.5-8.5	1/8"	3/4" - 16	1/2" - 13	N/A
Sleeve 5.0"	58471	10.25	3.1	5.6	6.5-8.5	1/8"	3/4" - 16	1/2" - 13	N/A
Sleeve 5.0"	58688	7.75	3.1	5.6	5.0-7.0	1/8"	3/4" - 16	1/2" - 13	N/A
Bellows									
Bellows 1B-5	58103	5.8	1.8	6.5	3.5-5.0	1/4"	3/8" - 16	3/8" - 16	1.75"
Bellows 1B-6	58407	7.1	1.9	7.0	4.0-6.0	1/8"	3/8" - 24	3/8" - 24	2.75"
Bellows 1B-6**	58736	7.1	2.7	7.0	4.0-6.0	1/8"	3/8" - 24	3/8" - 24	2.75"
Bellows 1B-6 Ultimate**	58740	7.0	2.7	7.0	4.0-6.0	1/8"	3/8" - 24	3/8" - 24	2.75"
Bellows 1B-8	58124	7.3	1.8	9.4	4.0-6.5	1/4"	3/8" - 16	3/8" - 16	2.75"
Bellows 2B-6, Reg.	58439	7.7	2.3	6.5	4.5-6.5	1/8"	3/8" - 24	3/8" - 24	2.75"
Bellows 2B-6, Reg. Ultimate**	58494	8.25	2.7	6.5	4.5-6.5	1/8"	3/8" - 24	3/8" - 24	2.75"
Bellows 2B-6, Ext.	58437	9.1	2.3	7.0	5.0-7.0	1/8"	3/8" - 24	3/8" - 24	2.75"
Bellows 2B-6, Ext.*	58401	9.1	2.3	7.0	5.0-7.0	1/4"	3/8" - 24	3/8" - 24	1.75"
Bellows 2B-6, Ext.**	58491	9.1	2.7	7.0	5.0-7.0	1/8"	3/8" - 24	3/8" - 24	2.75"
Bellows 2B-6, Ext. Ultimate**	58496	9.1	2.7	7.0	5.0-7.0	1/8"	3/8" - 24	3/8" - 24	2.75"
Bellows 2B-7, Ext.	58116	9.0	3.3	8.0	6.0-8.0	1/8"	3/8"-24	3/8"-24	2.75"
Bellows 2B-7, Ext. Ultimate**	58120	9.0	3.3	8.0	6.0-8.0	1/8"	3/8"-24	3/8"-24	2.75"
Tapered Sleeve									
1TS5.0"	58130	9.5"	4.25"	5.4"					

Service Parts Kit	P/N	Description
	25301	Kit includes: 1 - 20937 - 50ft. of 1/4" Poly Hose (Urethane) 2 - 20086 - Air Line Assembly 4 - 21838 - Tee 1/4"PTC - 1/4"PTC 4 - 21837 - Elbow 1/8"MNPT - 1/4"PTC 2 - 21830 - Elbow 1/4"MNPT - 1/4"PTC 4 - 21840 - Union 1/4"PTC x 1/4"PTC 2 - 21739 - Tee, Single Barb for .170 ID 2 - 21848 - Elbow 1/8"MNPT x 1/4"PTC

Fittings	P/N	Description
	21841	1/8"MNPT x 1/4"PTC
	21810	1/4"PTC-1/4"FNPT
	21869	1/4"FNPT-1/4"PTC
	21815	1/8"MNPT x 4AN
	21830	1/4"MNPT x 1/4"PTC
	21837	1/8"MNPT x 1/4"PTC
	21848	1/8"MNPT x 1/4"PTC
	21804	1/8"MNPT x 4AN M
	21807	1/4"MNPT x 1/4"PTC
	21813	1/4"MNPT x 4AN
	21839	1/4"PTC x 1/8"MNPT
	21838	1/4"PTC x 1/4"PTC
	21842	Y 1/4"PTC

PTC - Push-to-Connect Fitting
NPT - National Pipe Thread Fitting
AN - (Army-Navy) Flare-type Compression Fitting

1/4" Air Line	P/N	Description
	20220	Hose, 20ft., Nylon (20946)
	20230	Hose, 30ft., Nylon (20946)
	20250	Hose, 50ft., Nylon (20946)
	20260	Hose, 60ft., Nylon (20946)
	20315	Hose, 15ft., Urethane
	10530	Hose Cutter

Hose Assemblies	P/N	Description
	20084	Ultimate Plus Nylon Hose Assembly, 8ft.
	20086	LoadLifter Hose Assembly, 16ft.

Hose Kits	P/N	Description
	22007	Replacement Hose Kit - Push-on (Air Lift 1000 Series)
	22022	P-30 Hose Kit
	22030	Replacement Hose Kit - Screw-on (Air Lift 1000 Series)

Upgrade Any LoadLifter 5000 Series Kit

Ultimate Plus Upgrade Kit	P/N	Description	Braided Air Line Upgrade Kit	P/N	Description
	52301	Includes stainless steel air lines (2 x 5.5'), roll plates, AN fittings and mounting hardware		52300	Includes stainless air lines (2 x 5.5') and AN fittings only

COMPRESSOR SYSTEM PARTS

Compressor Parts	P/N	Description
	16060	Standard-duty 12V Air Compressor, 0.92 CFM, 100 PSI Replacement compressor for kits 25592 & 25980
	16192	Heavy-duty 12V Air Compressor, 1.03 CFM, 120 PSI Replacement compressor for kits 25854, 25856, 25980EZ, 74000 & 74000EZ
	16190	Compressor, 12V, 1.59 CFM, 150PSI Replacement compressor for kits 25572, 25690
	26156	Single Gauge Panel Assembly for LoadController
	26159	Dual Gauge Panel Assembly for LoadController
	25194	Single Analog Gauge
	25195	Dual Analog Gauge
	25196 (pod only)	25196 Analog Gauge Pod (pod only, gauge not included)
	26897	WirelessAir Harness
	26896	26896 WirelessOne Harness

Towtal View™ HD Camera with Versatile Mounts

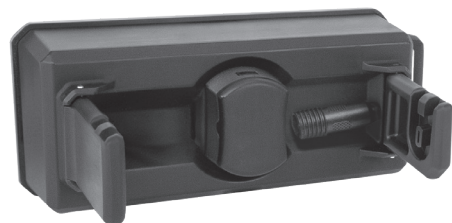


Towtal View Camera Features

- + 80° vertical and 110° horizontal field of view (FOV)
- + Wireless HD camera with over 100 feet of reliable range via a strong and secure Wi-Fi connection
- + Free mobile app for iOS and Android to view live color camera feed, record video, capture photos, add/remove backup-assist lines, mirror the image and rotate the image
- + Quick connect mounts allow for easy, no-tool swapping between hardwired and battery pack mounts
- + Infrared LED lights for night vision maintaining color viewing, rather than traditional black & white night vision
- + With a portable mount and 5+ hours of battery, the camera can be mounted in a variety of locations
- + Multi-coated lens for clarity by reducing glare, resisting fingerprints and scratches and improving color accuracy
- + IP68 waterproof rated
- + 2-year limited warranty



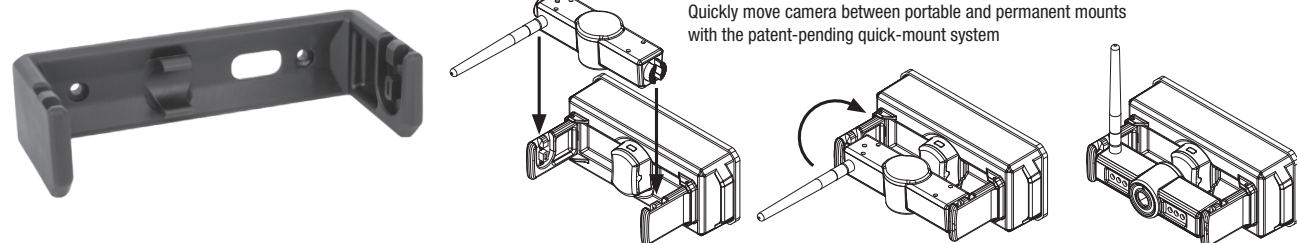
Versatile Mount Features



Portable suction cup power pack mount featuring quick-connect mount and 5+ hour lithium-ion battery

- + Patent pending multi-position adjustable mounts allow for various viewing angles (-65° down, +45° up)
- + Included hardwired permanent mount with IP67-rated waterproof quick connection easily connects to the trailer lights via the included wiring harness
- + Included rechargeable lithium-ion battery pack built into suction cup mount with 5+ hour battery

Quick-connect permanent mount includes wiring harness and all hardware for easy connection to trailer lights



Quickly move camera between portable and permanent mounts with the patent-pending quick-mount system

Q. Will adding air springs increase the weight rating of my vehicle?

A. No. Adding air springs does not change the Weight Rating (GVWR, GCWR, GAWR) of a vehicle. Adding weight over the factory rating is dangerous and voids your Air Lift warranty. Weight ratings take into account tires, bearings, frame, brakes and more. Increasing your suspension's ability to support weight does not increase the weight ratings. Never exceed your vehicle's weight ratings.

Q. Do you have to add a compressor (On-Board Air Compressor System) to your air springs?

A. A compressor isn't required, but it is convenient! An on-board air compressor system allows you to inflate and deflate your air springs on the go. Compressors remove the hassle of pulling over or searching for service stations with air pumps. With our on-board air compressor systems, all adjustments are automatic and can be made with the touch of a button while driving or parked.

Q. Do I have to keep air in the springs all the time, and how much pressure do I need?

A. Yes, you should always maintain the recommended minimum air pressure of 5 PSI, even if your vehicle isn't loaded. This keeps the air springs "in shape" and able to perform without rubbing or wearing. Just check the air pressure periodically, as you do for your tires.

Q. Can air springs raise or lower my vehicle?

A. If you're asking if conventional air springs can take the place of a lift or lowering kit, the answer is NO. If you're asking if air springs will cause a normal ride height vehicle to ride higher, the answer is YES, if you want them to, by adding pressure, but only by an inch or two. If you DO want to lower your vehicle, look into our Air Lift Performance products. If you have a lowered truck and want to add air springs for towing, look at SlamAir™ (page 34). If you have a lifted truck and would like to add the support of air springs, check out Universal Air Spring Spacers (page 37). Call customer support at (800) 248-0892 for more information.

Q. My vehicle rides rough while towing or hauling; will adding air make it ride better?

A. Absolutely! Air springs are engineered to increase ride quality when carrying heavy loads and help fatigued springs ride smoothly. Our air springs greatly improve ride quality when towing or hauling.

Q. Can I use air springs with factory overload springs?

A. Yes, most of Air Lift's applications work with overload springs. Check our application guide for your vehicle.

Q. How long do air springs last?

A. Forever! If they are properly installed and maintained, our air springs can last indefinitely. Just check the pressure regularly, or use an on-board air system to maintain it for you. Air Lift offers a lifetime warranty on all of our air spring kits. See page 5 for details.

Q. What's better, steel helper springs or air helper springs?

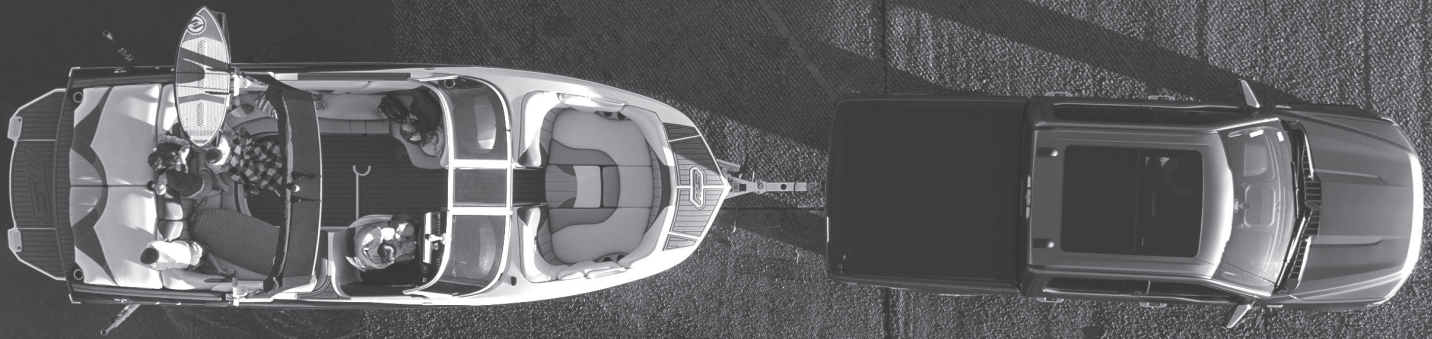
A. Air Lift air helper springs are the best solution because they are totally adjustable — steel springs are not. All you have to do is add or remove air to fine-tune your ride for all load situations! That's the reason professional drivers choose air over steel.

Q. How do I get replacement parts if I ever need them?

A. Air Lift sells many parts individually, while our competitors want to sell you pairs of parts. You can get Air Lift replacement parts from your dealer or directly from Air Lift Company. If your dealer cannot help, call Air Lift at 1-800-248-0892.



◀ Check out all the
NEW Air Lift Products



Product information and photographs are accurate at the time of printing. Kit and part photographs are representative and vary according to vehicle application. Air Lift Company reserves the right to upgrade or modify content as new components become available and is not responsible for misprints.

AD-868 • 5/24 • Copyright © 2024 Air Lift Company

Customer Support:

service@airliftcompany.com

1.800.248.0892

airliftcompany.com

